



RTO Provider No: 22274

HEAD OFFICE: Suite 15, 11 - 17 Pearcedale Parade
BROADMEADOWS VIC 3047

WEBSITE: www.advancetraining.com.au

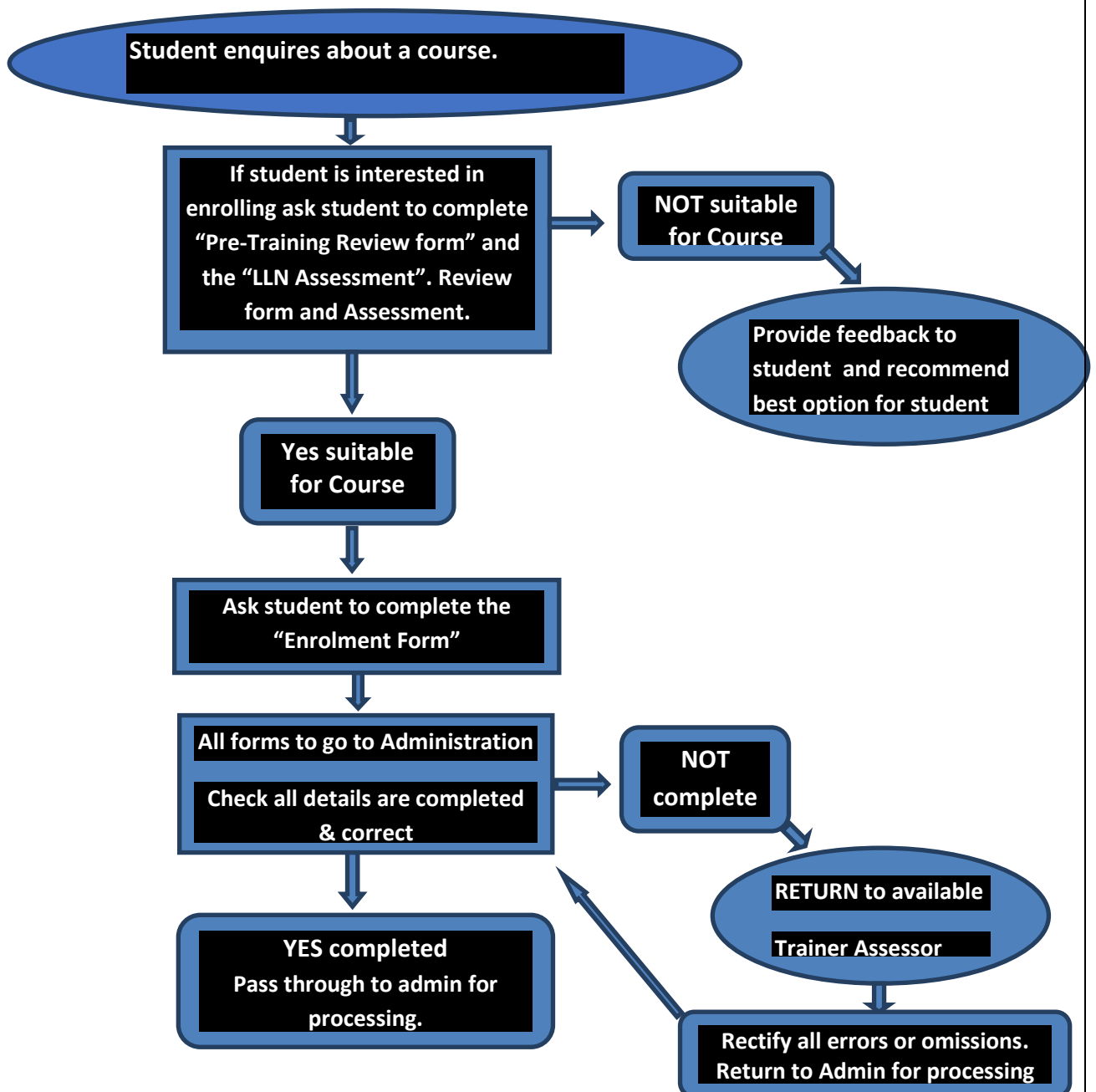
EMAIL: info@advancetraining.com.au

PHONE: (03) 9309 0059

FAX: (03) 9309 7490

STUDENT ENROLMENT PROCESS FLOW CHART

Process for New Enrolments (PTR and LLN)



Trainers: Will need to hand in all assessments and attendance sheets within a reasonable timeframe so student administration can access them for processing.